

## FUNGUS BEETLES INVADING HOMES

Small reddish or black beetles found flying in homes during late summer are often a type of fungus beetle. Two common species seen are the minute fungus beetles, Family Lathiridae (also called plaster beetles), and the foreign grain beetle, *Ashverus advena*. Newly constructed homes, damp areas in basements and bathrooms and homes in rural areas are commonly affected.

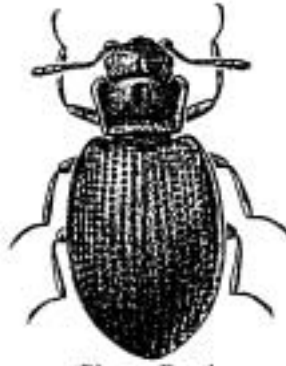
The various fungus beetles are from 2-3 mm in length (1/10-1/6 inch) and are often seen weekly flying around the home. They remind some people of the small beetles found in flour or cereal products. Grain infesting insects do not fly under normal conditions. They will be concentrated in areas of high humidity.

Fungus beetles feed on mold or mildews and are attracted to anything that is musty smelling. Moisture levels in new buildings will often attract these insects. They ARE HARMLESS, but small enough to get through most screening, vents and other openings. Anything that will lower humidity and dry things out will help. Once cold weather sets in and kills outside beetles, and the furnace starts running, the insects will disappear.

We do not suggest insecticides for control. Although flying insect sprays will kill the adults, more will migrate indoors within 24 hours. Running dehumidifiers or checking vents for proper screening will help reduce migration.



Foreign Grain Beetle



Plaster Beetle

|◀|  
Actual size  
is 2-3 mm.